

Bring your carousels into compliance with the latest safety regulations, and more...

Standard Features & Benefits



- ✓ ANSI-MHI24.1, EN954-1 Cat-3
- ✓ Variable speed AC motor control
- ✓ Off-the-shelf parts availability
- ✓ Dedicated PLC for each carousel
- ✓ Dedicated sensor power
- ✓ Supplier parts list provided
- ✓ NFPA79 LOTO
- ✓ UL Approved
- ✓ PLC based technology
- ✓ Plug & Play sensors
- ✓ Dual Motor support
- ✓ Operator Button Station
- ✓ Service friendly
- ✓ Dual-channel safety

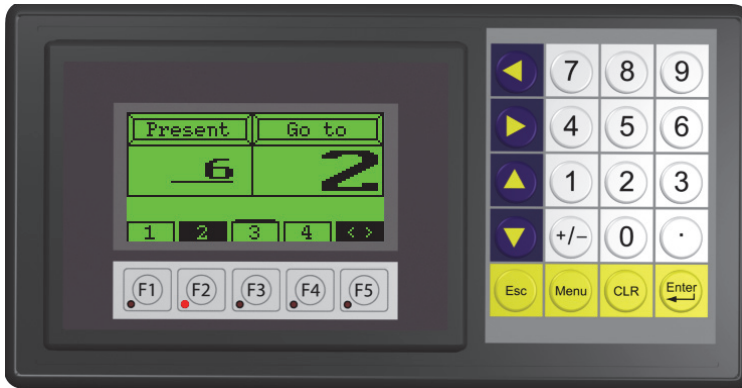


Operator Panel options

| | Supports Carousels* | Jog Control | Carrier Select | Touch Screen | Separate Keypad | 5-Color backlight | 1/4-VGA Color | VGA Color | Display Size | Windows PC | Part Images | Remote Diagnostics |
|-------|---------------------|-------------|----------------|--------------|-----------------|-------------------|---------------|-----------|--------------|------------|-------------|--------------------|
| OP3D | 1..4 | ✓ | ✓ | ✓ | ✓ | ✓ | | | 3.1" | | | |
| OP6D | 1..4 | ✓ | ✓ | ✓ | | | ✓ | | 5.7" | | | |
| OP6De | 1..4 | ✓ | ✓ | ✓ | | | ✓ | | 5.7" | | | ✓ |
| OP8De | 1..4 | ✓ | ✓ | ✓ | | | | ✓ | 8.4" | | | ✓ |
| OPC | 1..4 | ✓ | ✓ | (1) | PC | | | | PC | ✓ | ✓ | ✓ |

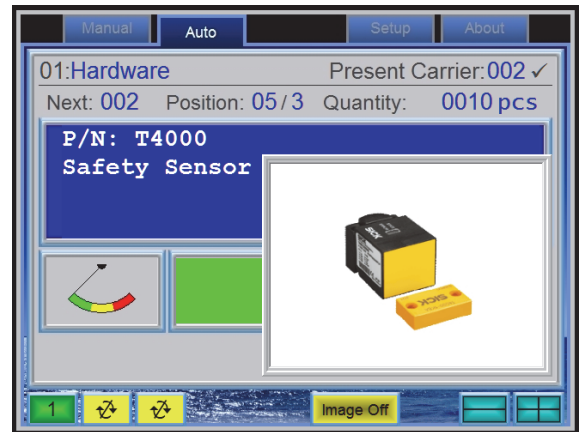
(1) Yes, when used with a touch-panel PC

* Base controller(s) may require Ethernet interface option



Operator Panel - OP3

Shown with standard membrane keypad



Operator Panel - OPC

Shown with part image display feature

Other options

- ✓ Product protection photocells
- ✓ Wireless foot pedals/keyfobs
- ✓ Inventory Management software
- ✓ Shared Operator Panels
- ✓ Ethernet & other interfaces
- ✓ Expanded sensor plug port
- ✓ Remote Diagnostics
- ✓ PC based operator panels
- ✓ Control cabinet locks
- ✓ Replacement count sensors
- ✓ Legacy interface protocols
- ✓ LOTO Power Disconnect panels

